

CERTIFICATE OF LOCATION OF GOVERNMENT CORNER

NORTH QUARTER Corner of Section 24, Township 106N, Range 42W

5th Principal Meridian, State of Minnesota, County of Murray.

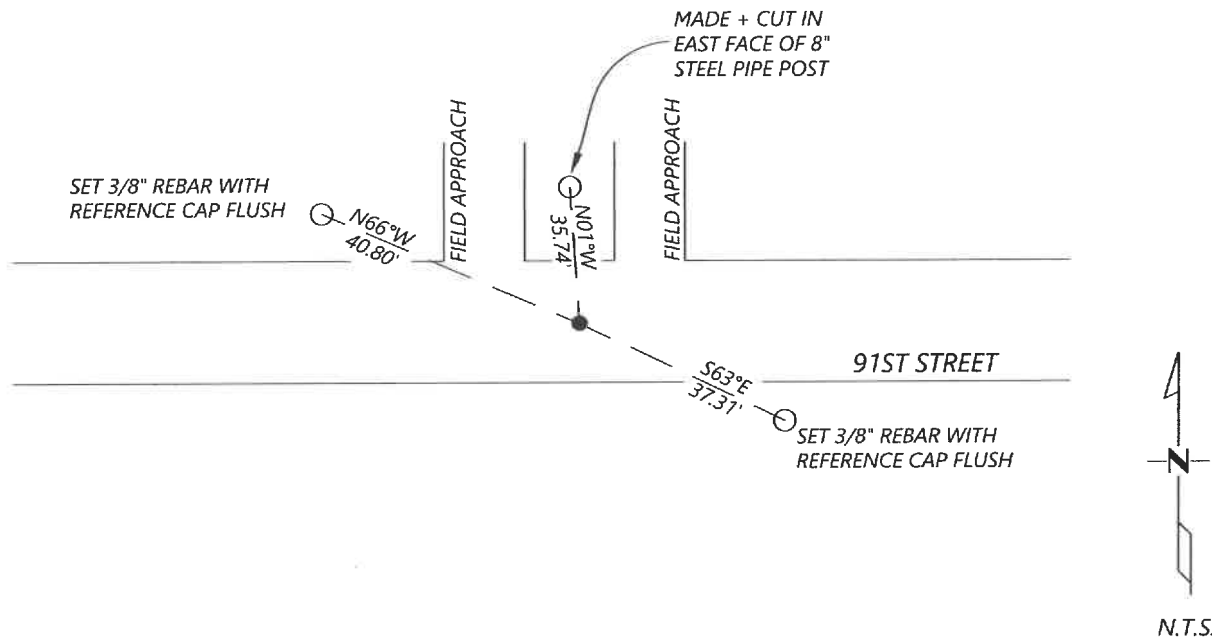
At the corner location shown on the sketch:

☐ On _____ found a _____
DATE

☐ left monument as found ☐ lowered monument ☐ removed monument (explain)

☒ On 11/08/2021 placed a NO.4 REBAR CAPPED "RLS 57085".
DATE

SKETCH OF REFERENCE TIES



Statement of evidence for this corner location is on back of this page.

I hereby certify that this document was researched and prepared by me or under my direct supervision and that I am a licensed Land Surveyor under the laws of the State of Minnesota.

Signature [Signature]

Date 4-19-2022 License No. 57085

Title:

☒ Land Surveyor ☐ Professional Engineer
☐ County Surveyor ☐ County Engineer

OFFICE OF THE COUNTY RECORDER

County of Murray

I hereby certify that this document was filed in the Co.

Recorder's office at _____ M. on the 22nd day of April A.D. 20 22

County Recorder Karen Brown

by _____, Deputy

DOCUMENT NO. _____

SETH WECKMAN
Minnesota License No. 57085

Statement of Evidence:

North Quarter corner of Section 24, Township 106 North, Range 42 West, 5th Principal Meridian, Murray County, Minnesota.

1866 J.W. Bishop, U.S. Deputy Surveyor, during the original public land survey a post was set in a mound.

1901 J.W. Woolstencroft, survey shows a distance from the center quarter of Section 13, but no description of the monument is given.

2021 Westwood Professional Services searched the area and did not recover a monument. Lines of occupation consist of an East/West gravel road and a field line to the North. After analysis of field measurements, it was determined that the best position for the corner is proportionally between the NE and NW corners of Section 24 and held the centerline of the gravel road for the North/South position. A No. 4 rebar was set with a cap marked "RLS 57085" and established 3 reference ties.

Analysis of the recovered data, field evidence and survey measurements, indicates that the monument set is the correct perpetuation of this corner. For additional information concerning this corner please contact Westwood Professional Services.